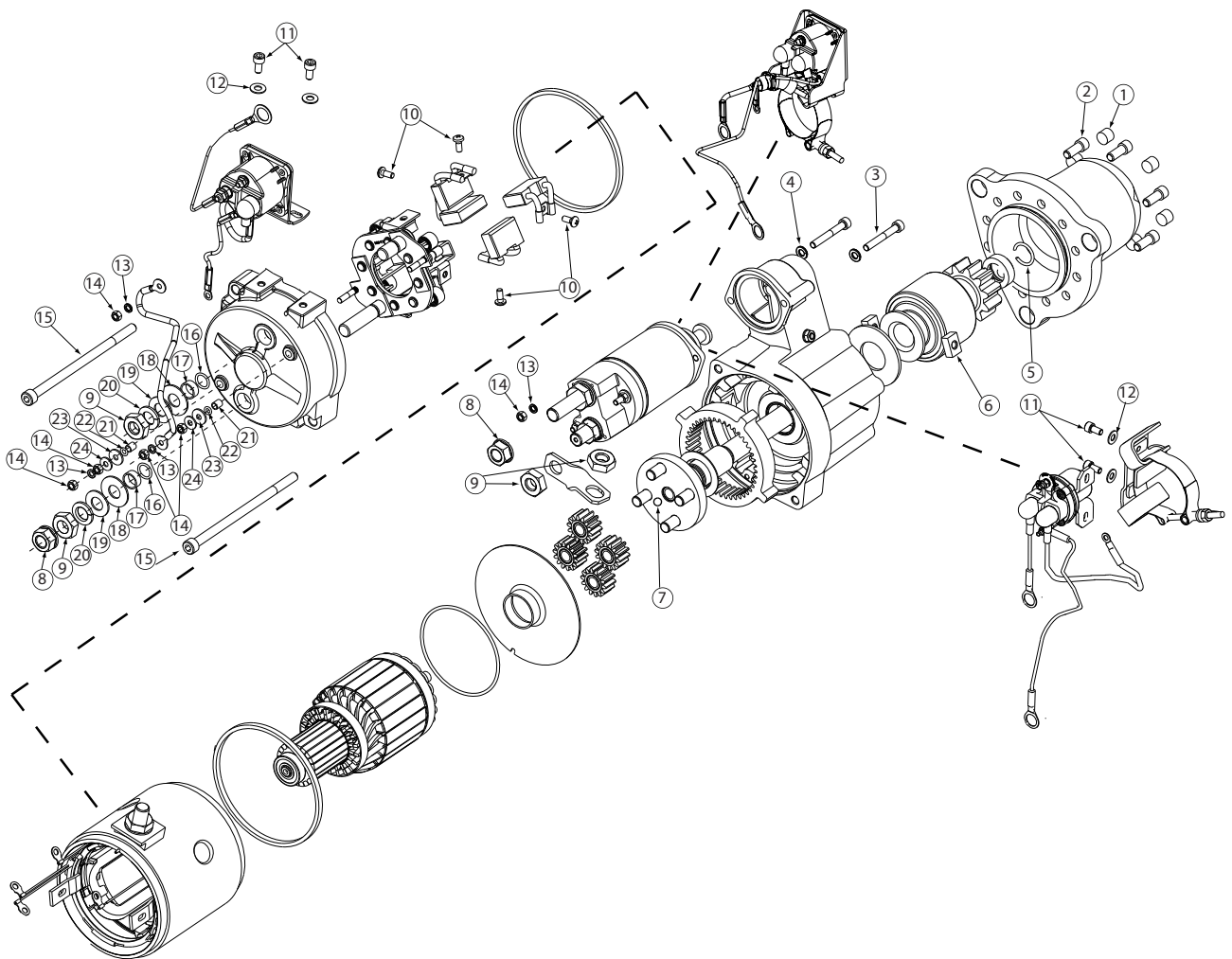


Source: Leece-Neville Heavy Duty Systems Division - Arcade, NY USA
Date: JULY 7, 2017
Bulletin No: TSB-3016
Models: M125R Starter Motor
Subject: Hardware kit for M125R starter motors K212103968S



Important: The information contained in this bulletin is intended for use by trained, professional technicians who have the proper tools, equipment, and training to perform the required maintenance described above. This information is NOT intended for 'do-it-yourselfers'; and you should not assume that this information applies to your equipment. If you have any questions regarding this information please visit our website at www.prestolite.com, or contact our technical service department at:

Date: JULY 7, 2017

Bulletin No: TSB-3016

Note: All of thses components are part of the hardware kit and not available for individual purchase.

Description	Qty.	Key	Where used
Rubber Plug	6	1	Rubber nose housing plugs
Screw, Socket Head	6	2	Attaches nose housing to shift lever housing
Screw, Socket Head	2	3	Attaches solenoid to shift lever housing
Lockwasher	2	4	Lockwashers for Key 3 bolts
Snap Ring	1	5	Drive shaft snap ring
Cam, Lever Arm	2	6	Cams for drive assy
Thrush Ball	1	7	Used in gear box assy
Nut, Hex Flange	2	8	Attaches customers cables to starter
Nut, Hex Jam	4	9	Negative stud hardware/ motor strap
Steel Screws	4	10	Brush Screws
Screw, Socket Head	2	11	Attach helper relay to CE Hsg
Washer, Flat	2	12	Flat washers for Key 11 screws
Washer, Lock	4	13	Used in various locations. See iso view
Nut, Hex	4	14	Used in various locations. See iso view
Bolt	2	15	Attach CE housing to motor
O-Ring	2	16	Seals studs on CE housing
Bushing, Insulation	2	17	Insulates studs on CE housing
Washer, Insulating	2	18	Insulates studs on CE housing
Washer, Flat	2	19	Negative stud hardware
Washer, Lock	2	20	Negative stud hardware
Sleeve, Insuating	2	21	Insulates studs on CE housing
O-Ring	2	22	Seals studs on CE housing
Washer, Insulating	2	23	Insulates studs on CE housing
Washer, Flat	2	24	Attaches brush gear to CE hsg

Important: The information contained in this bulletin is intended for use by trained, professional technicians who have the proper tools, equipment, and training to perform the required maintenance described above. This information is NOT intended for 'do-it-yourselfers'; and you should not assume that this information applies to your equipment. If you have any questions regarding this information please visit our website at www.prestolite.com, or contact our technical service department at: